

NC2-Series Concrete

SPECIFICATIONS

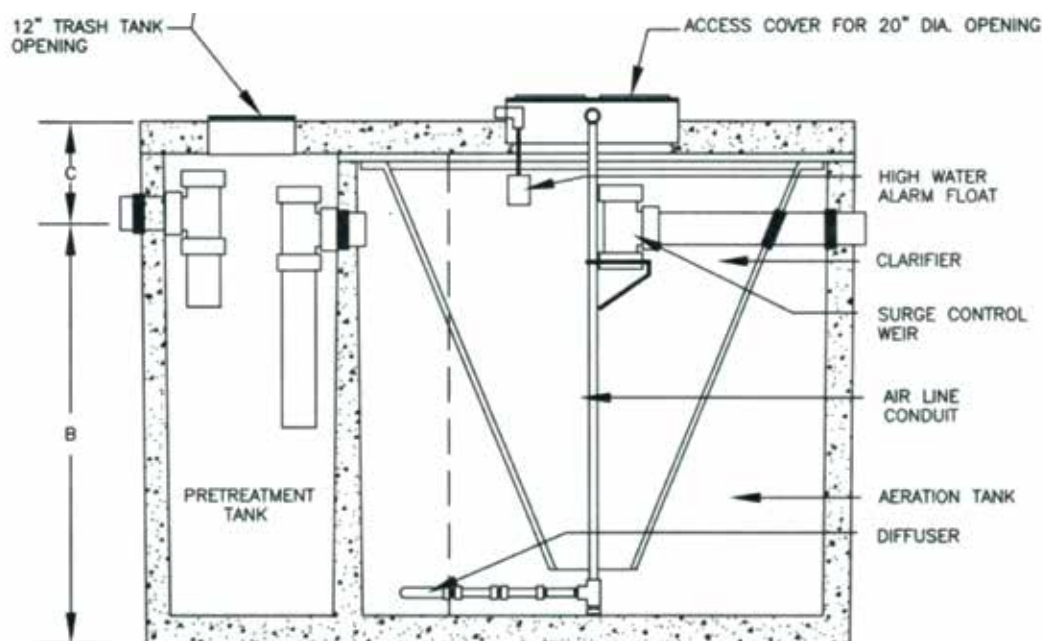
Treatment Capacity _____ 500 to 800 G.P.D.

BOD Loading _____ 1.25 to 1.96 lbs.

Aerator _____ 2.8 to 3.6 scfm

Control Panel _____ Raintight

Electrical _____ 115V/60Hz



DIMENSIONS:

MODEL	Length	B	C	Width	Outlet
500 NC2	104"	60"	10 $\frac{1}{2}$ "	75"	58"
600 NC2	107"	60"	10 $\frac{1}{2}$ "	82"	58"
750 NC2	107"	70"	10 $\frac{1}{2}$ "	82"	68"
800 NC2	107"	72"	10 $\frac{1}{2}$ "	82"	70"

U.S. Patent Numbers

5,221,470 • 5,770,081 • 5,785,854 • US 8,038,874 B2 • US 6,358,411 B1 • US 7,513,994 B2 • US 7,178,677 B1

Other Patents Pending

Corporate Office (409) 755-1500 • Toll Free (800) 586-3656 • Fax (409) 755-6500

www.clearstreamsystems.com

SPECIFICATIONS

MODEL	TREATMENT CAPACITY	BOD LOADING	AERATOR	CONTROL PANEL
500NC2	500 GPD	1.25 lbs	2.8 scfm	Raintight
600NC2	600 GPD	1.5 lbs.	2.8 scfm	Raintight
750NC2	750 GPD	1.85 lbs	3.6 scfm	Raintight
800NC2	800 GPD	1.96 lbs.	3.6 scfm	Raintight

Other systems available from 500 to 1,500 GPD and NSF/ANSI Standard 40, 245, 350



CLASS I
NSF/
ANSI 40



Clearstream Systems are one of the finest aerobic wastewater systems available in the industry today. The high degree of treatment is accomplished at a remarkably low operating cost per month.

Clearstream Wastewater Systems are in full compliance with NSF/ANSI Standard 40.

Clearstream Systems provides a two-year warranty on its equipment, without hidden conditions. We are confident of the durability and quality of our systems, so our warranty is simple. If the equipment is defective, we will either replace it with new components or repair the existing component at no charge.

Aerators, control panels, and accessory equipment from Clearstream Systems are manufactured according to the strictest guidelines. We have a long history of providing our customers with the most reliable components created with top quality materials while still being offered at a reasonable price.